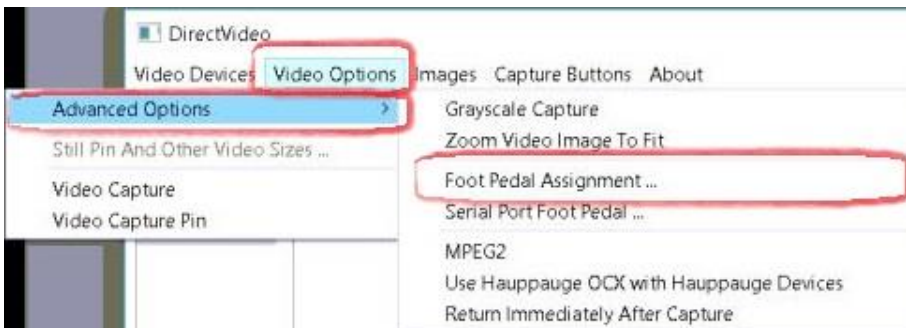


SOTA Imaging Claris i4D Software Configuration for Apteryx

1. While the Claris IOC is connected, click on the **Capture Video Icon**
2. Under **Video Devices** you should select either **USB 2860 Device** or **Hi-Speed USB Video Grabber**



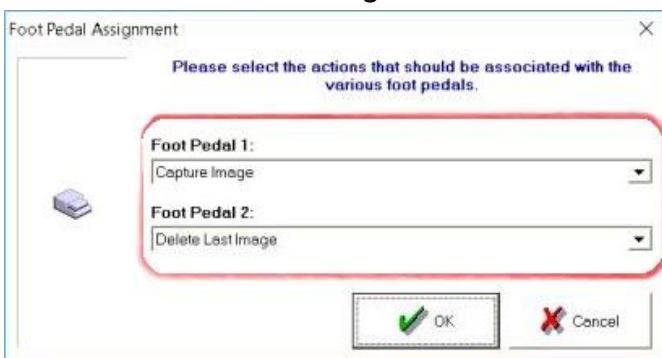
3. Click on **Video Options** and under **Advanced Options** select **Foot Pedal Assignment ...**



4. Change the Foot Pedal Assignment to match the following:

Foot Pedal 1: Capture Image

Foot Pedal 2: Delete Last Image



Click **OK** to finish.