

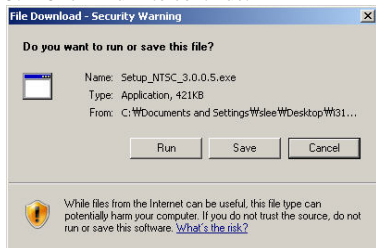
Quick Guide - Software Setup

It is important to install the Claris i310D driver **BEFORE** plugging your Claris i310D into your computer. Please refer to the following procedures for detailed installation instructions.

1. Insert the driver CD into CD-ROM or DVD drive.
2. Claris i310D setup screen will appear.



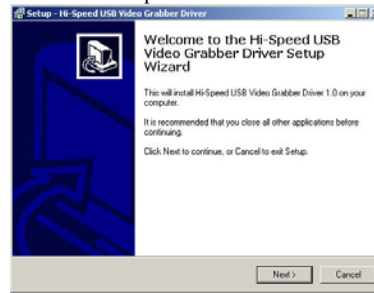
3. Click "Read First" to read the important information before installing driver.
4. After reading "Read First", click "Install Driver".
5. Click "Run" to continue.



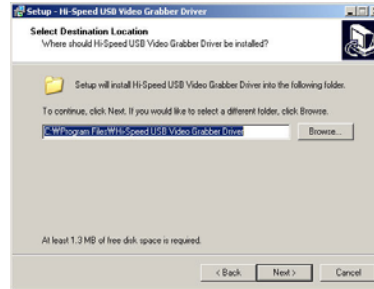
6. Click "Run" to continue.



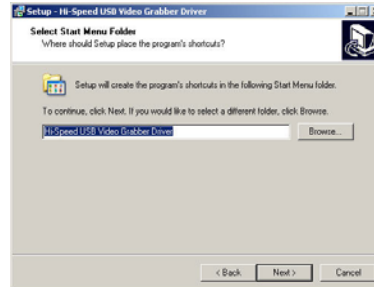
7. Driver Setup will start. Click "Next".



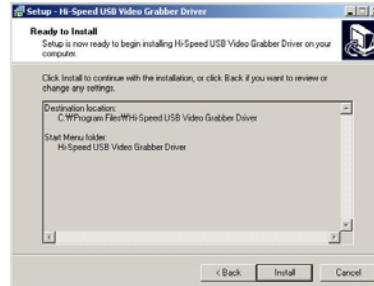
8. Click "Next".



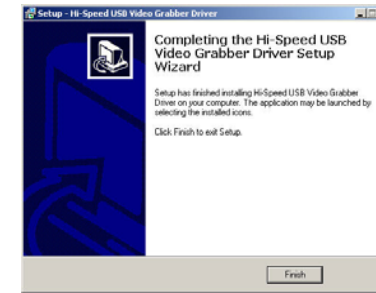
9. Click "Next".



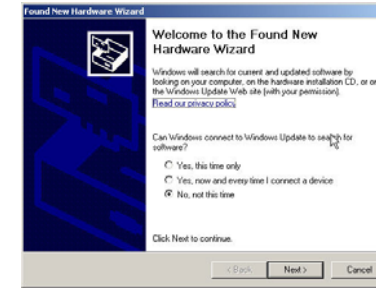
10. Click "Install".



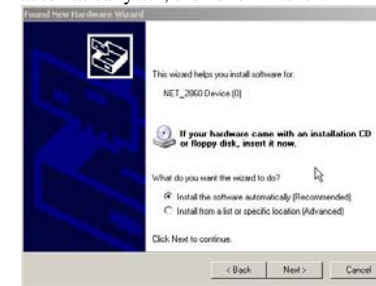
11. Click "Finish".



12. Plug your Claris i310D into your computer. Windows will recognize your Claris i310D automatically. Select "No, not this time", then click "Next".



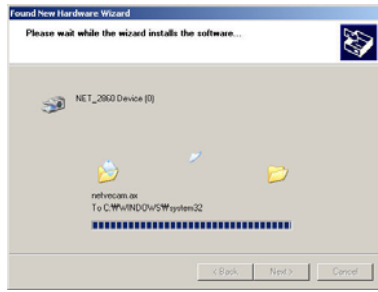
13. When Asked for the driver, select "Install the software automatically...", then click "Next".



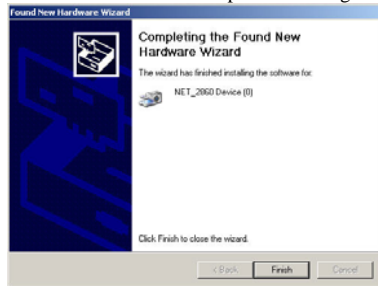
14. When "Hardware Installation" window appears, click "Continue Anyway".



15. Driver installation will start.



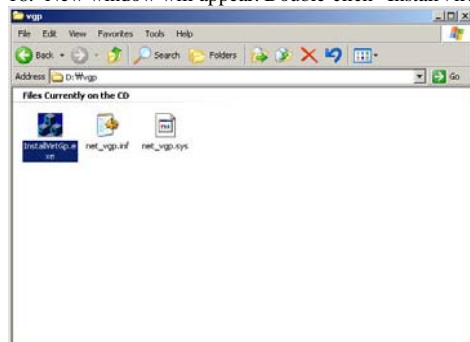
16. Click "Finish" to complete installing the driver.



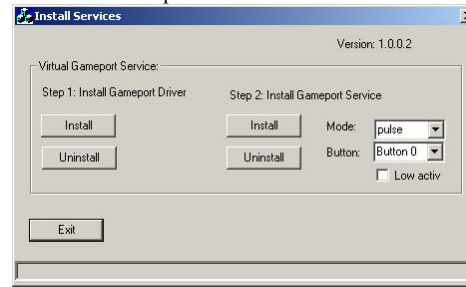
17. Now go back to Claris i310D setup screen. Click "Install Gameport".



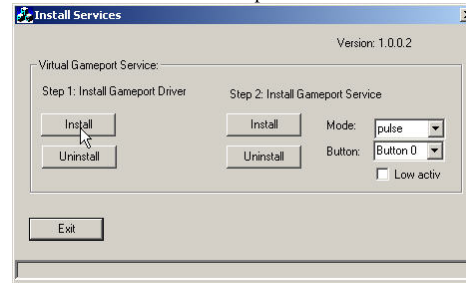
18. New window will appear. Double-click "InstallVirtGp.exe".



19. Virtual Gameport installation will start.



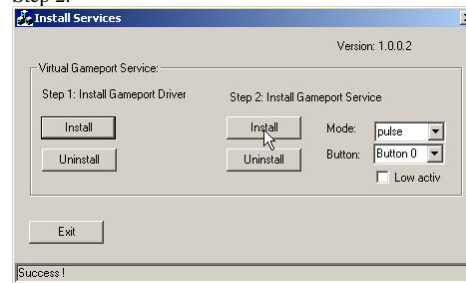
20. Click "Install" under Step 1.



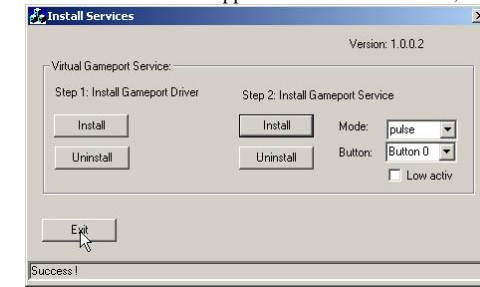
21. When "Hardware Installation" window appears, click "Continue Anyway".



22. When "Success!" appears in the status window, click "Install" under Step 2.



23. When "Success!" appears in the status window, click "Exit".



24. Restart the PC to activate the driver.